



BLOCK D HILL ROAD, WENTWORTH POINT
HOME BUSH BAY PROPERTIES PTY LTD
LANDSCAPE DEVELOPMENT APPLICATION
DECEMBER 2018

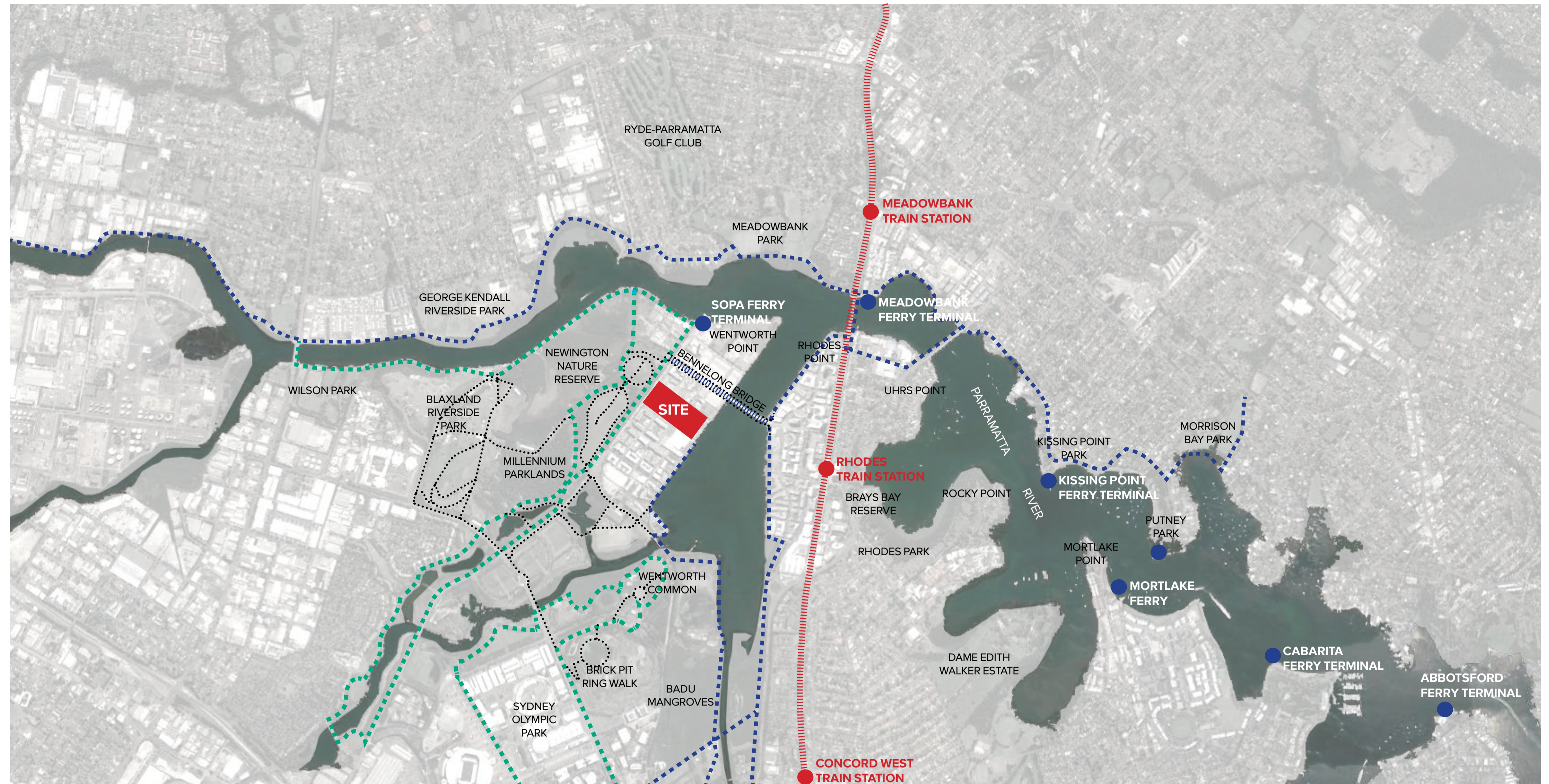
SITE | CONTEXT AND BACKGROUND

1.1 REGIONAL CONTEXT

Wentworth Point is a suburb in Western Sydney, New South Wales. Located 16km west of the Sydney Central Business District. Wentworth Point is in the local government area of City of Parramatta.

The project site is located on the Wentworth Point Peninsula, bounded by Homebush Bay to the east, and the Newington Nature Reserve and Millennium Parkland to the West. It sits amongst several other new developments that have been undertaken progressively since the land was rezoned in 2014. The Peninsula is relatively isolated, connected only by Hill Road. A new bus, pedestrian and cycle bridge to the north of the study area provides connection to the suburb of Rhodes in the east. Rhodes Train Station is approximately 1.5km or 20minute walking distance from the project area. The Olympic Park Ferry terminal is located on the northern end of the Peninsula with additional future amenity proposed in this area.

All developments within the Wentworth Point area are required to provide a foreshore pedestrian path. This provision offers further opportunity for pedestrian connectivity and the creation of an active and engaging waterfront.



LEGEND

- Ferry Terminal
- Train Station
- Parramatta Valley Cycleways
- Sydney Olympic Park Authority Shared Pathways

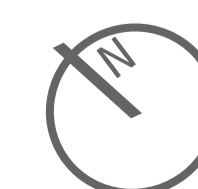
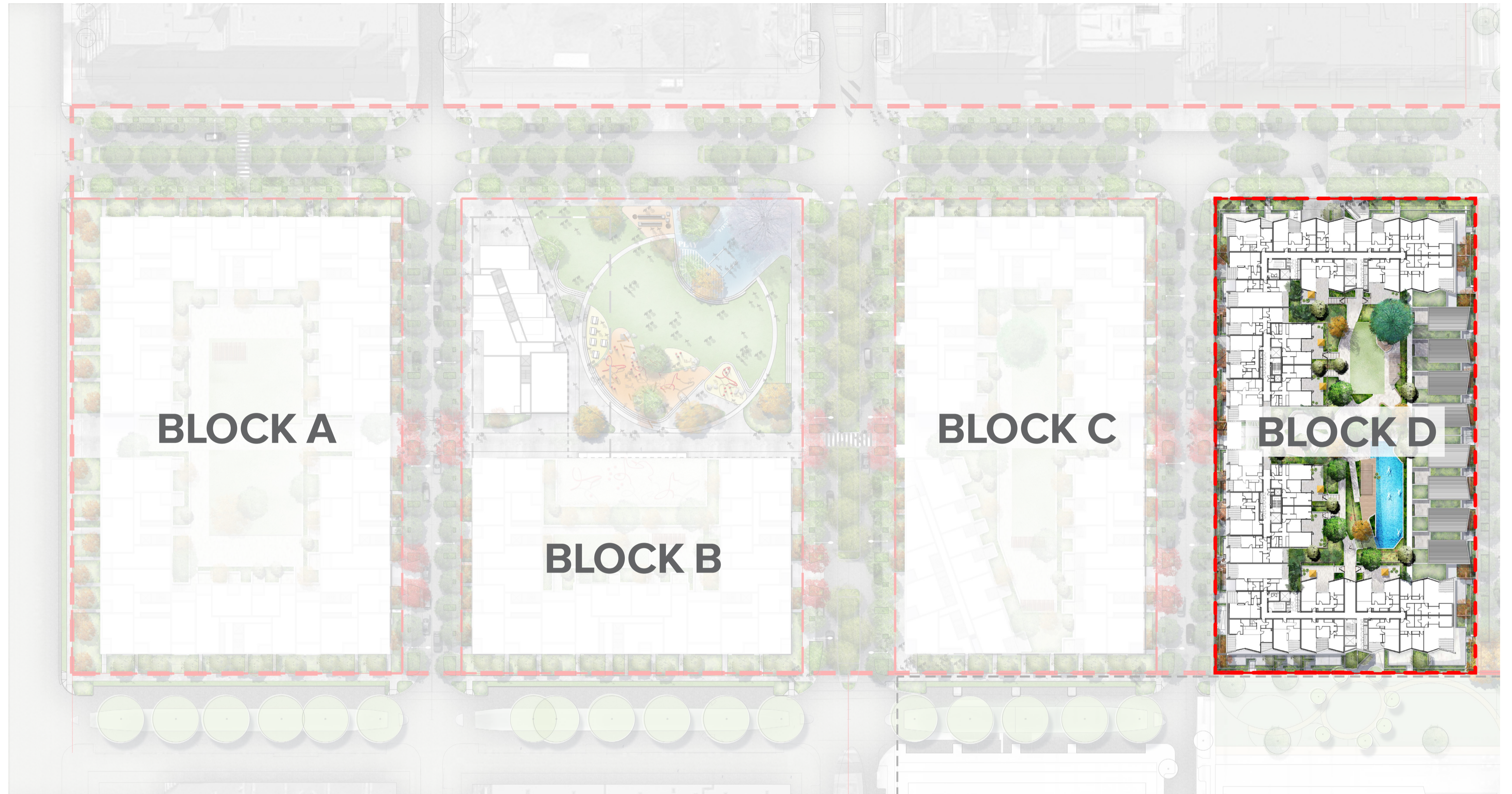
1.2 LANDSCAPE BLOCK D PACKAGE - SCOPE OF WORKS

This package is intended for the Development Application Approval for the landscape works associated with Block D for the City Freeholds development site. It incorporates the ground floor/level one entry courtyards into the block, as well as the podium landscape design.

The landscape package has been prepared in conjunction with the Homebush Bay West DCP.

It makes reference to proposed materials, finishes and planting species. The design intent is to promote and facilitate a lively and attractive interface to the public domain as well as an entertaining and vibrant podium landscape for the residents of the block.

Refer to the following design report and detailed drawings to illustrate the landscape design intent for the Infrastructure.



CONCEPT | BLOCK D LANDSCAPE MASTERPLAN



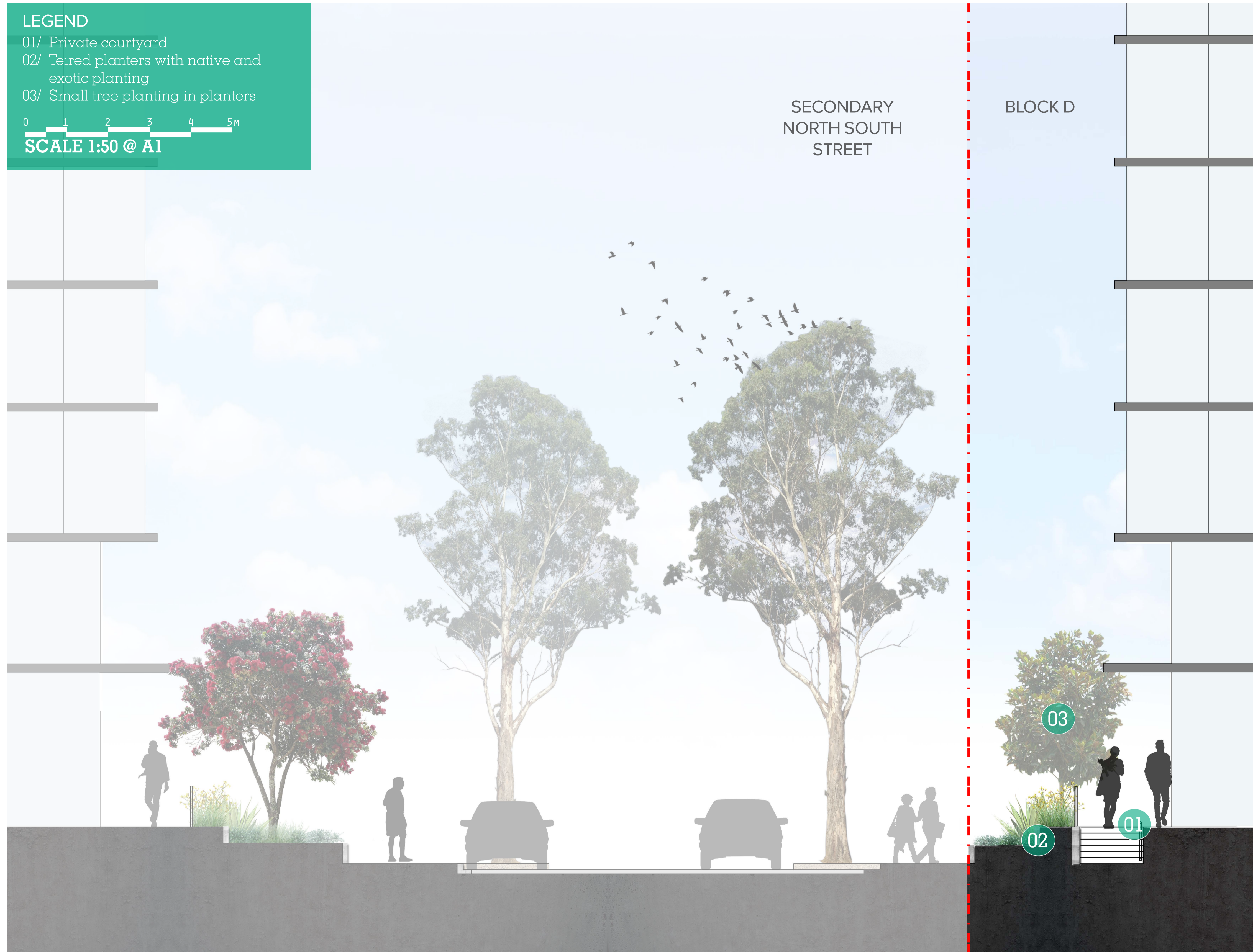
CONCEPT | STREET INTERFACE SECTION AA

LEGEND

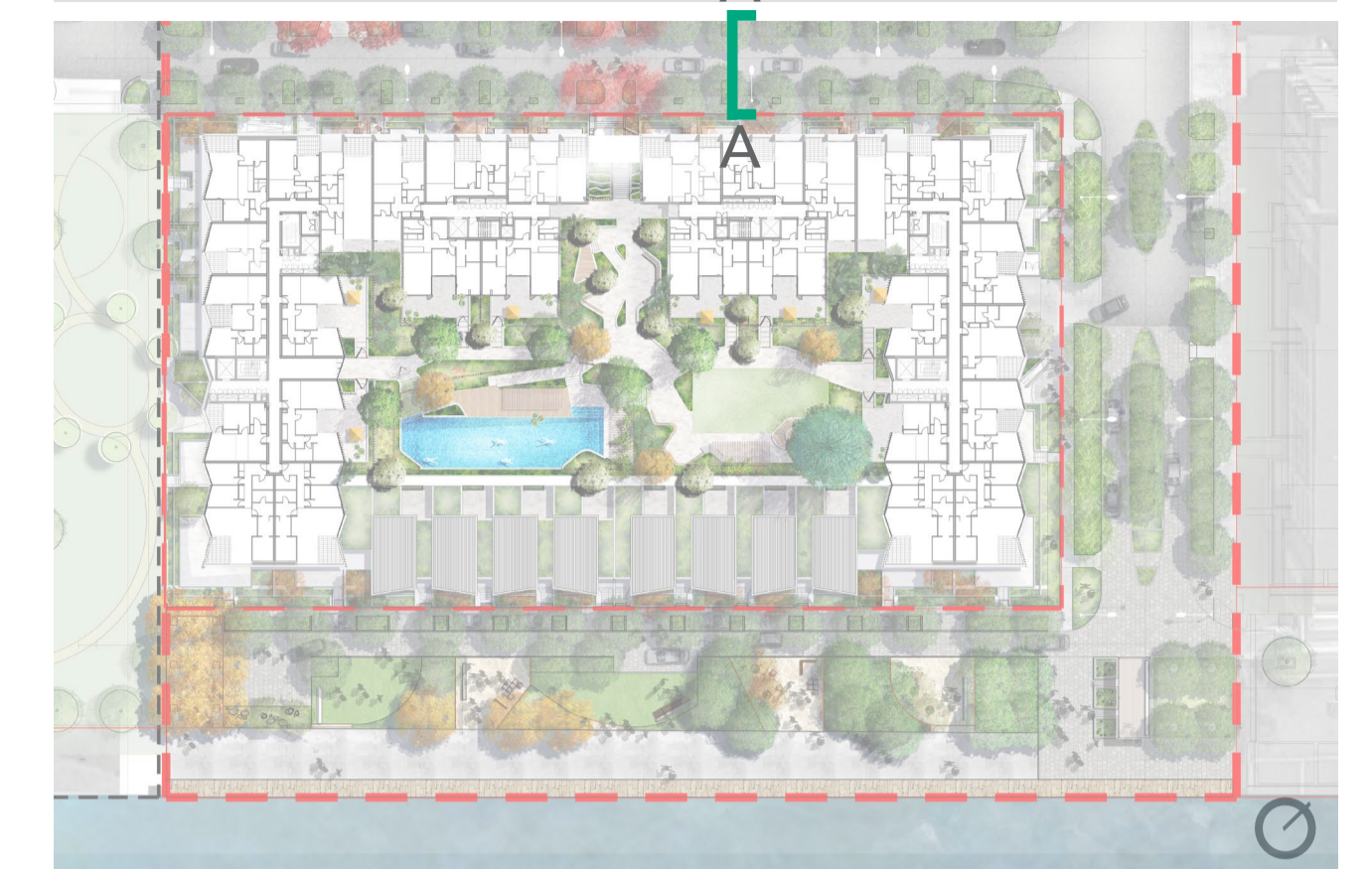
- 01/ Private courtyard
- 02/ Teired planters with native and exotic planting
- 03/ Small tree planting in planters

0 1 2 3 4 5M

SCALE 1:50 @ A1



KEY PLAN



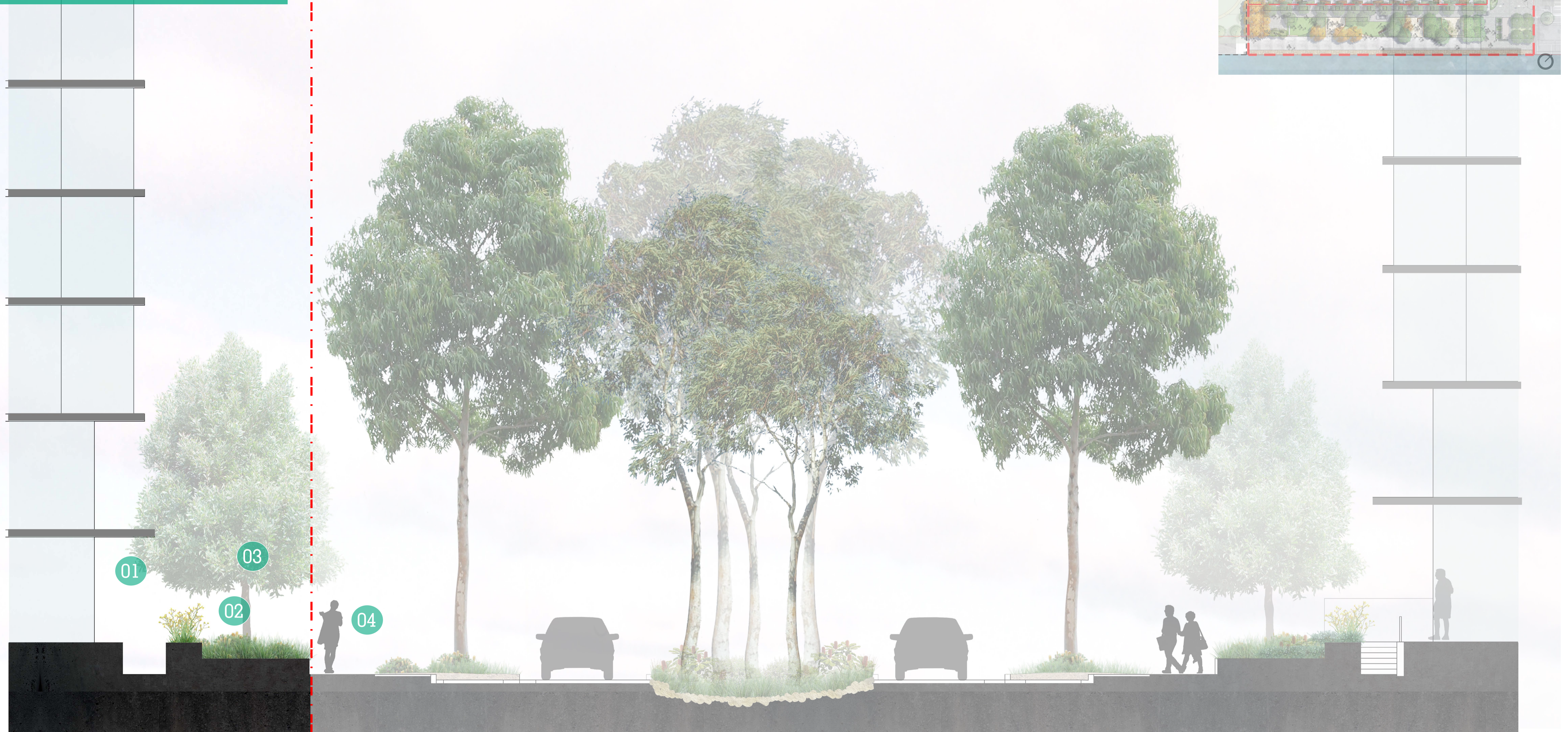
CONCEPT | STREET INTERFACE SECTION BB

LEGEND

- 01/ Private courtyard
- 02/ Tiered planters with native and exotic planting
- 03/ Small tree planting in planters
- 04/ Block D boundary

0 1 2 3 4 5M

SCALE 1:50 @ A1



CONCEPT | PODIUM SECTION CC

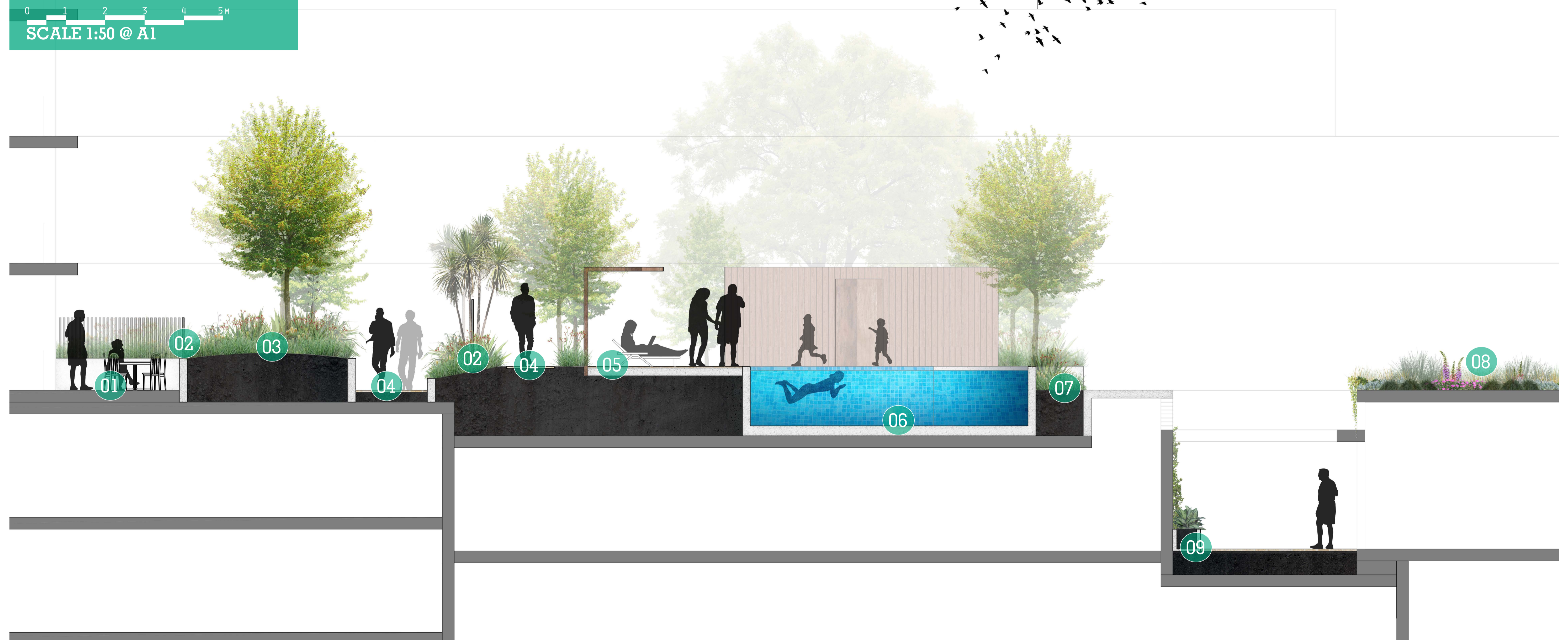
LEGEND

- 01/ Private courtyard
- 02/ Security fence
- 03/ Raised planters with a mix of native and exotic species
- 04/ Circulation zone
- 05/ Shade structure with lounge seating opportunities around pool
- 06/ Communal pool
- 07/ Low Boundary planting to maximise views towards foreshore
- 08/ Extensive roof garden planting
- 09/ Raised planter in courtyard with shade tolerant shrubs and climbers
- 10/ Proposed changeroom

0 1 2 3 4 5M

SCALE 1:50 @ A1

KEY PLAN



CONCEPT | PODIUM SECTION DD

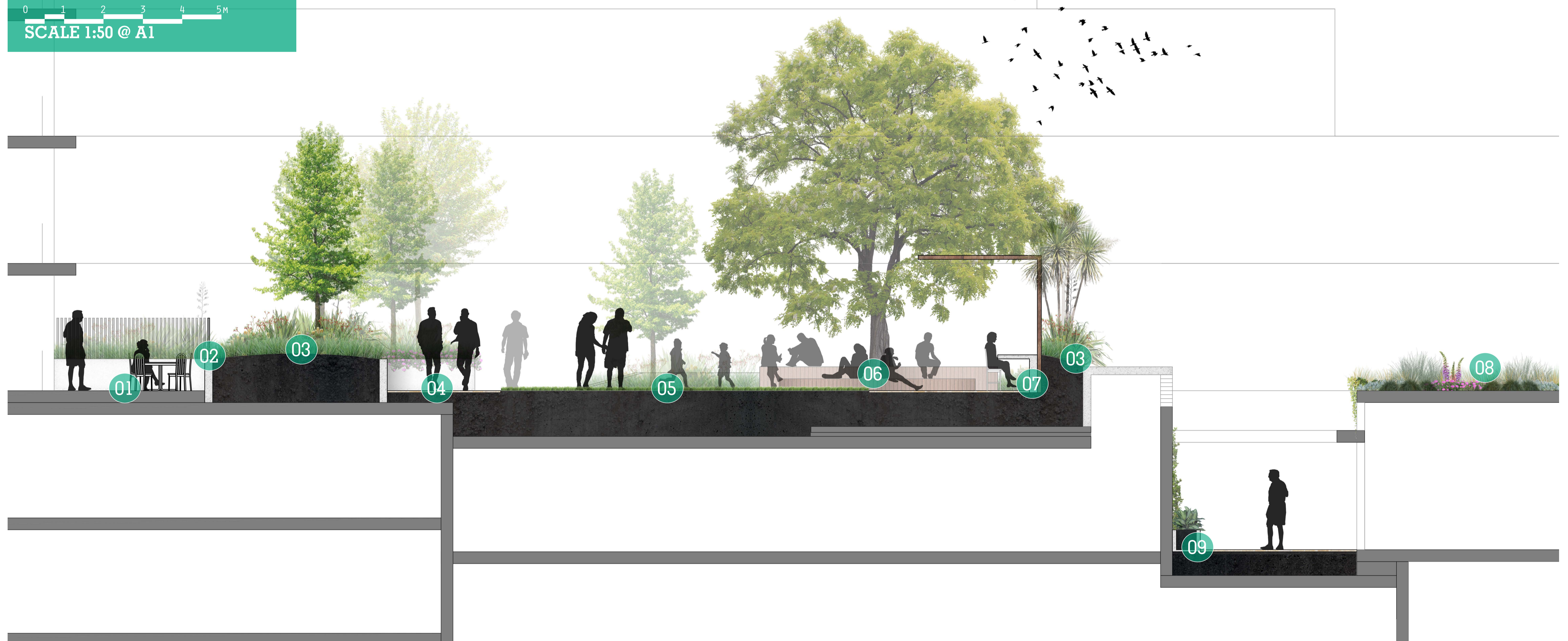
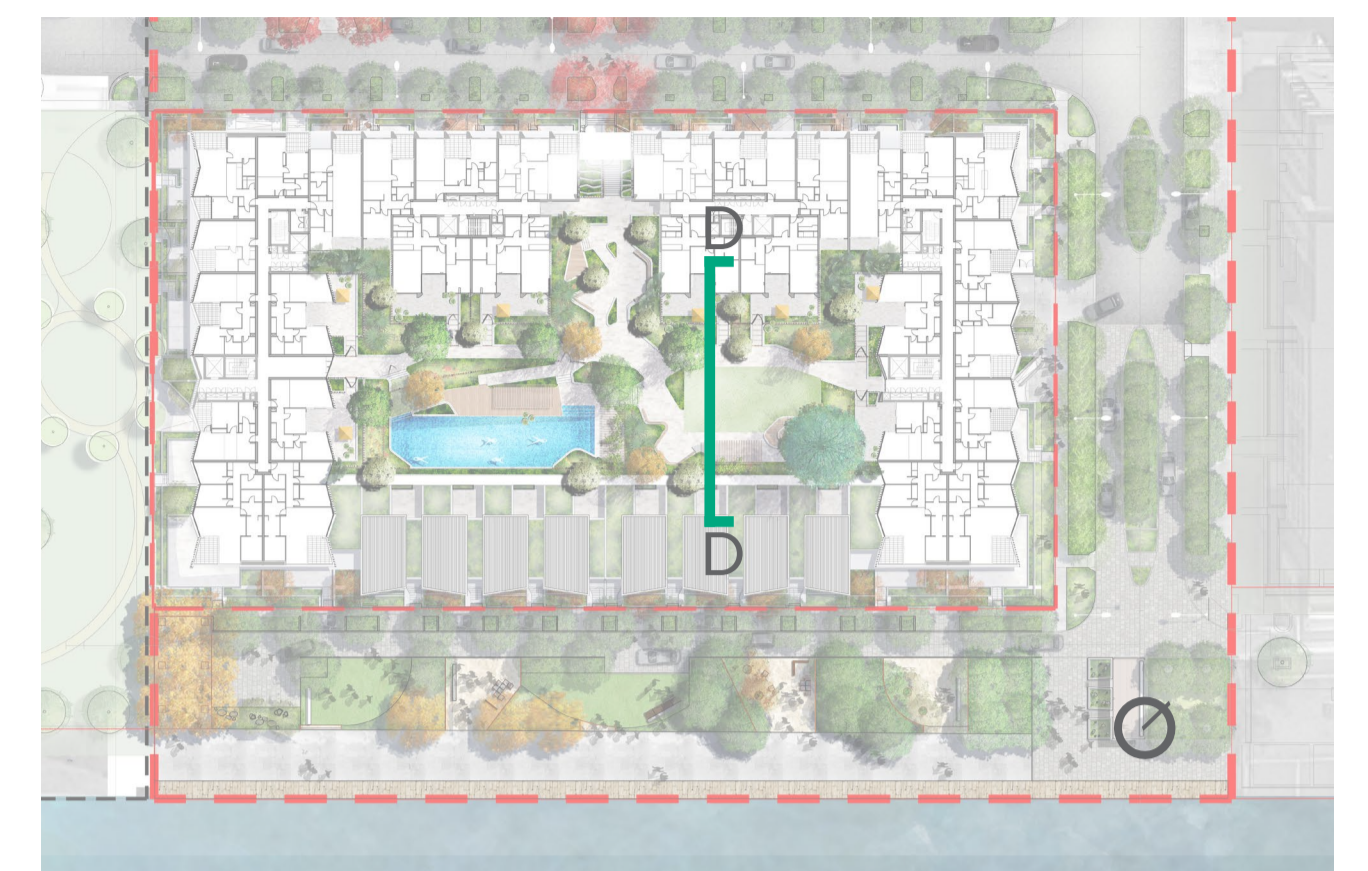
LEGEND

- 01/ Private courtyard
- 02/ Security fence
- 03/ Raised planters with a mix of native and exotic species
- 04/ Circulation zone
- 05/ Open turf space
- 06/ Stepped timber deck with large feature tree
- 07/ Shade structure with built in table wall and seating opportunities to support BBQ facilities
- 08/ Extensive roof gardens
- 09/ Raised planter in courtyard with shade tolerant shrubs and climbers

0 1 2 3 4 5m

SCALE 1:50 @ A1

KEY PLAN



CONCEPT | PODIUM SECTION EE

LEGEND

01/ Raised planters with a mix of native and exotic species - min 800mm depth

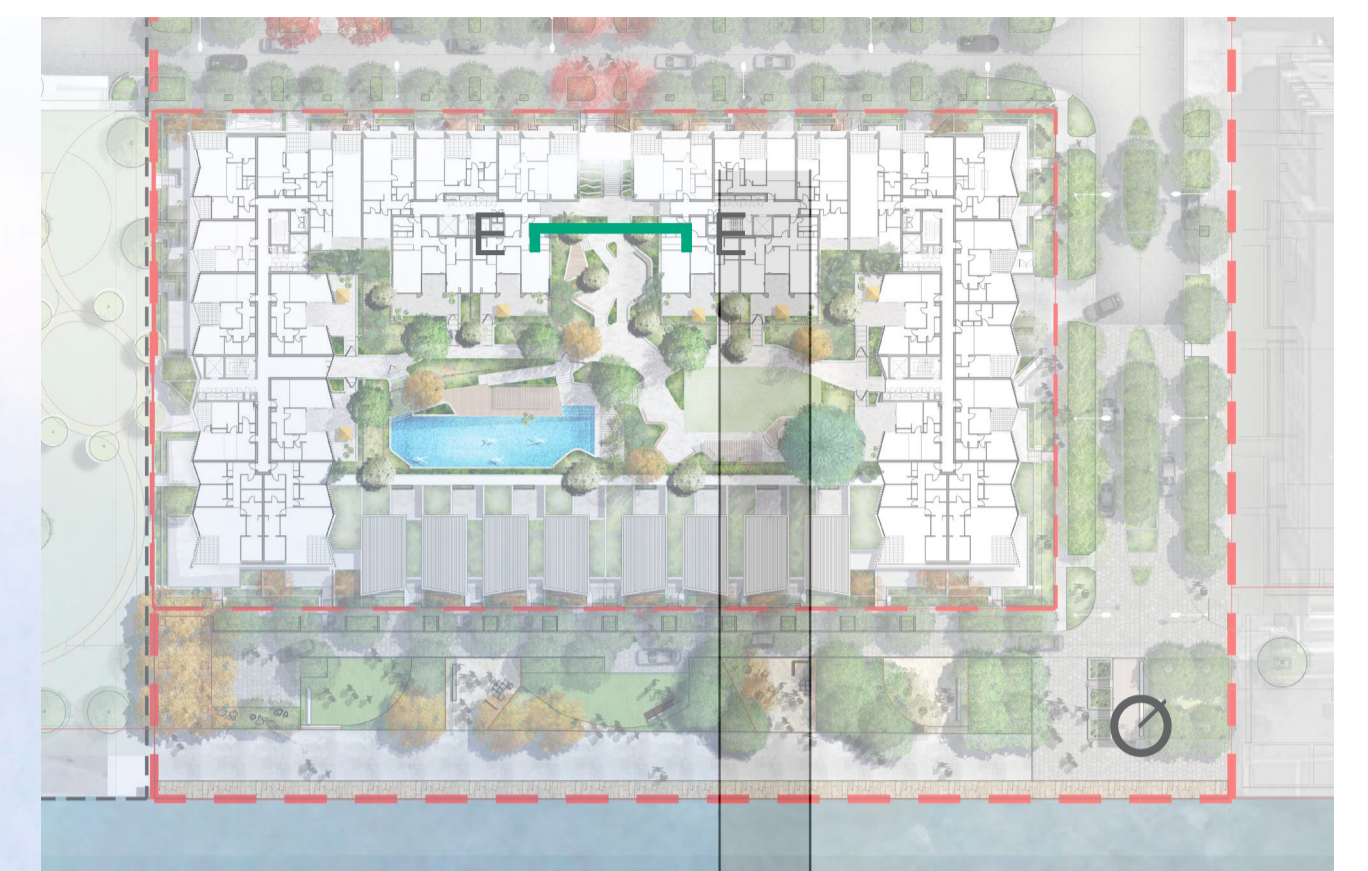
02/ Paved pathway

03/ Raised deck nook with seating edge tucked amongst planter bed

0 0.5 1 1.5 2 2.5M

SCALE 1:25 @ A1

KEY PLAN



CONCEPT | SOIL DEPTH DIAGRAM

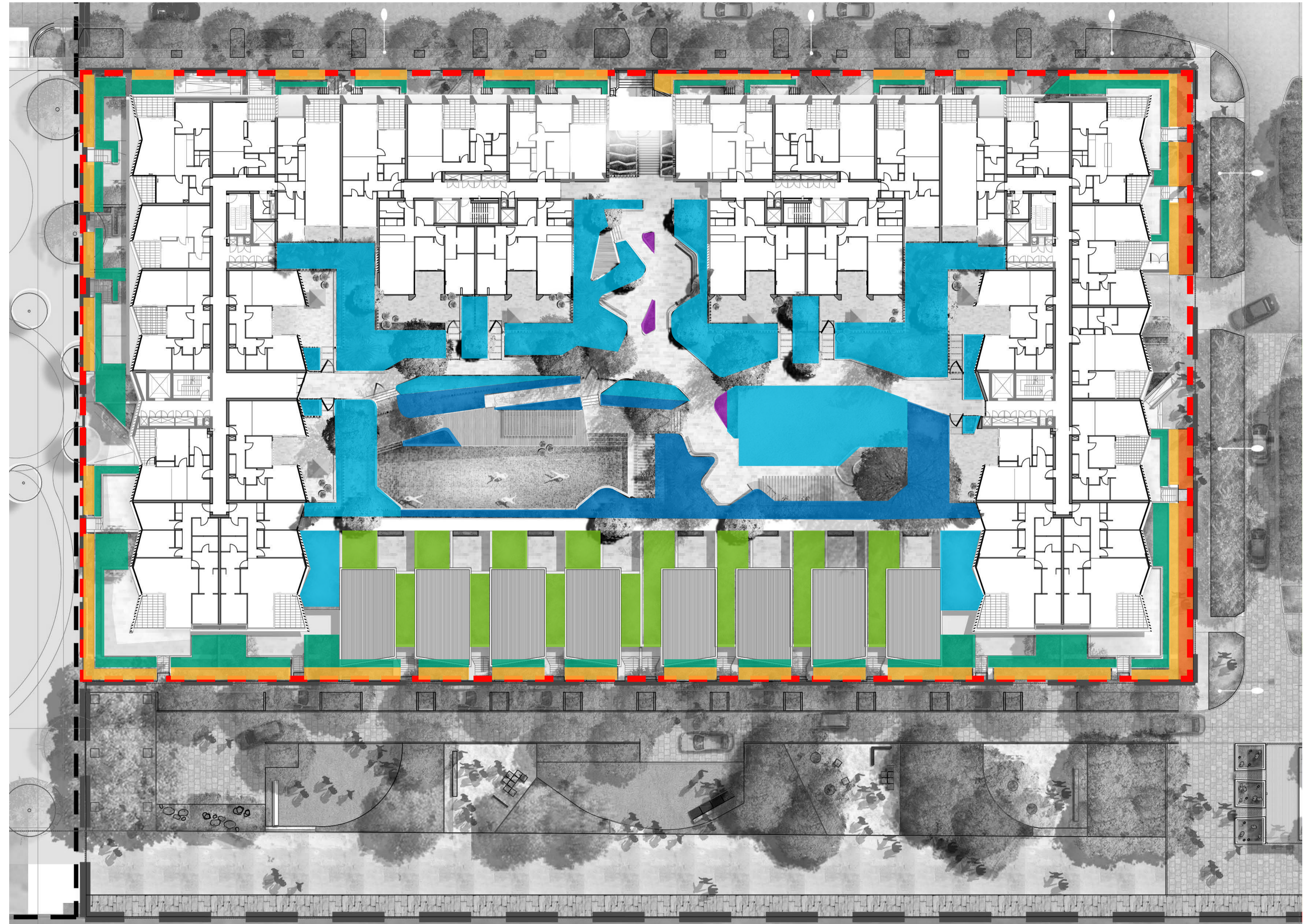
LEGEND

Streetscape

- Deep soil
- 500mm high planter
- 900mm high planter

Podium

- 800mm high planter
- 1.1-1.2m high planter
- 1.2-1.7m soil
- 150-200mm shallow roof gardens



PLANTING PALETTE - PODIUM

TREES



FERNS



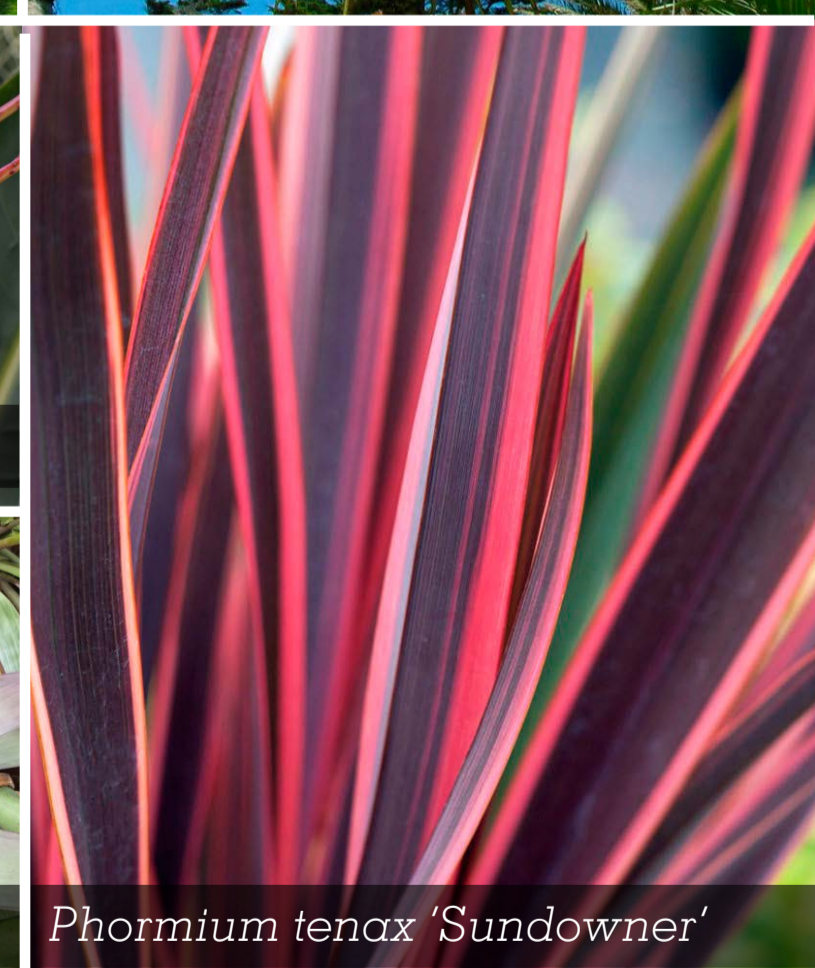
SHRUBS



GROUNDCOVERS



ACCENTS



PLANTING SCHEDULE - PODIUM

17-453 Hill Rd, Wentworth Park Block D Podium PLANT SCHEDULE

CODE	BOTANIC NAME	COMMON NAME	MATURE SIZE (h x w) (m)	POT SIZE	QUANTITY
TREES & PALMS					
Aco	<i>Angophora costata</i>	Smooth-Barked Apple	20 x 10	400L	1
Gt	<i>Gleditsia triacanthos</i> 'Sunburst'	Golden Honey Locust	15 x 7	75L	17
Tl	<i>Tristaniopsis</i> 'Luscious'	Luscious Water Gum	10 x 5	75L	20
SHRUBS & ACCENTS					
Ac	<i>Alpinia caerulea</i>	Native Ginger	2 x 2	200mm	56
By	<i>Beschorneria yuccoides</i>	Mexican Lily	1.5 x 2	200mm	12
Cz	<i>Calathea zebrina</i>	Zebra Plant	1 x 1	200mm	82
Cme	<i>Carissa macrocarpa</i> 'Emerald Star'	Natal Plum	1 x 1	200mm	153
Cm	<i>Clivia miniata</i>	Bush Lily	1 x 1	200mm	26
Cg	<i>Cordyline glauca</i>	Cordyline	2 x 0.5	200mm	118
Cpd	<i>Cordyline</i> 'Pink Diamond'	Cordyline	1.8 x 1	200mm	77
Ctd	<i>Cordyline</i> 'Torbay Dazzler'	Cordyline	1.5 x 1.5	200mm	35
De	<i>Doryanthes excelsa</i>	Gynea Lily	3 x 1.5	200mm	9
Ew	<i>Euphorbia characias wulfenii</i>	Mediterranean Spurge	1.5 x 1.5	200mm	25
Ga	<i>Gardenia augusta</i> 'Florida'	Gardenia	1.5 x 1.5	200mm	36
Prc	<i>Philodendron</i> 'Rojo Congo'	Rojo Congo	1.5 x 1	200mm	103
Px	<i>Philodendron</i> 'Xanadu'	Xanadu	1 x 1	150mm	129
Pts	<i>Phormium tenax</i> 'Sundowner'	New Zealand Flax	1.5 x 1.5	150mm	37
Pt	<i>Pittosporum tobira</i> 'Miss Muffet'	Miss Muffet	1 x 1	200mm	42
Sr	<i>Strelitzia reginae</i>	Bird of Paradise	2 x 2	200mm	47
Sc	<i>Syzygium</i> 'Cascade'	Cascade Lilly Pilly	3 x 2	200mm	48
Ts	<i>Tradescantia spathacea</i>	Boat Lily	0.5 x 1	200mm	73
GRASSES & RUSHES					
Dlj	<i>Dianella caerulea</i> 'Little Jess'	Flax Lily	0.4 x 0.4	150mm	329
Ljr	<i>Liriope muscari</i> 'Just Right'	Lilyturf	0.45 x 0.45	150mm	413
Lv	<i>Lomandra</i> 'Verday'	Mat Rush	0.6 x 0.6	150mm	101
Nc	<i>Neomarica caerulea</i>	Walking Iris	0.8 x 0.8	150mm	164
FERNS & CYCADS					
Aa	<i>Asplenium australasicum</i>	Birds Nest Fern	1.5 x 1.5	200mm	15
Bs	<i>Blechnum</i> 'Silver Lady'	Silver Lady Fern	1.5 x 1.5	200mm	3
Br	<i>Bromeliad</i> Species	Bromeliad	1 x 1	150mm	27
Ca	<i>Cyathea australis</i>	Rough Tree Fern	5 x 2	300mm	17
Da	<i>Dicksonia antarctica</i>	Scaly Tree Fern	9 x 4	300mm	3
Zf	<i>Zamia furfuracea</i>	Cardboard Plant	1.5 x 1.5	200mm	10
GROUNDCOVERS					
Cmg	<i>Carissa macrocarpa</i> 'Green Carpet'	Green Carpet Natal Plum	0.3 x spreading	150mm	624
Cgl	<i>Carpobrotus glaucescens</i>	Pig Face	0.25 x spreading	150mm	700
Dr	<i>Dichondra repens</i>	Kidney Weed	0.2 x spreading	150mm	72
Dsf	<i>Dichondra repens</i> 'Silver Falls'	Kidney Weed	0.2 x spreading	150mm	622
Mp	<i>Myoporum parvifolium</i>	Creeping Boobialla	0.15 x spreading	150mm	60
Sm	<i>Senecio mandraliscae</i>	Blue Chalk Sticks	0.2 x 0.5	150mm	621
Vh	<i>Viola hederacea</i>	Native Violet	0.2 x 0.5	150mm	37

PLANTING PALETTE - PUBLIC DOMAIN

TREES



FERNS



SHRUBS



GROUNDCOVERS



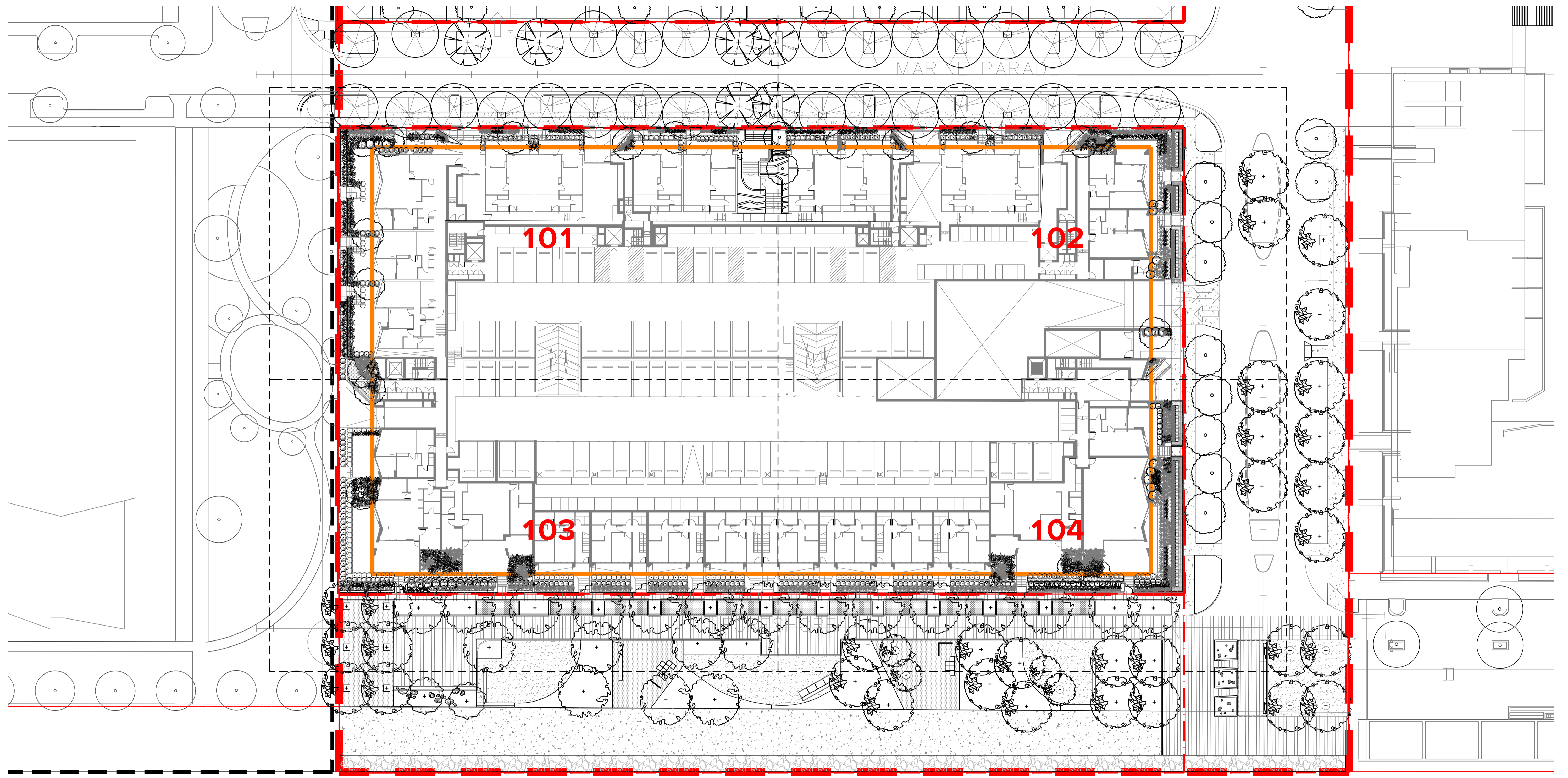
ACCENTS



PLANTING SCHEDULE - PUBLIC DOMAIN

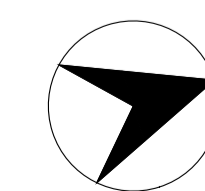
17-453 (Hill Rd Block D Ground Floor, Wentworth Park) PLANT SCHEDULE

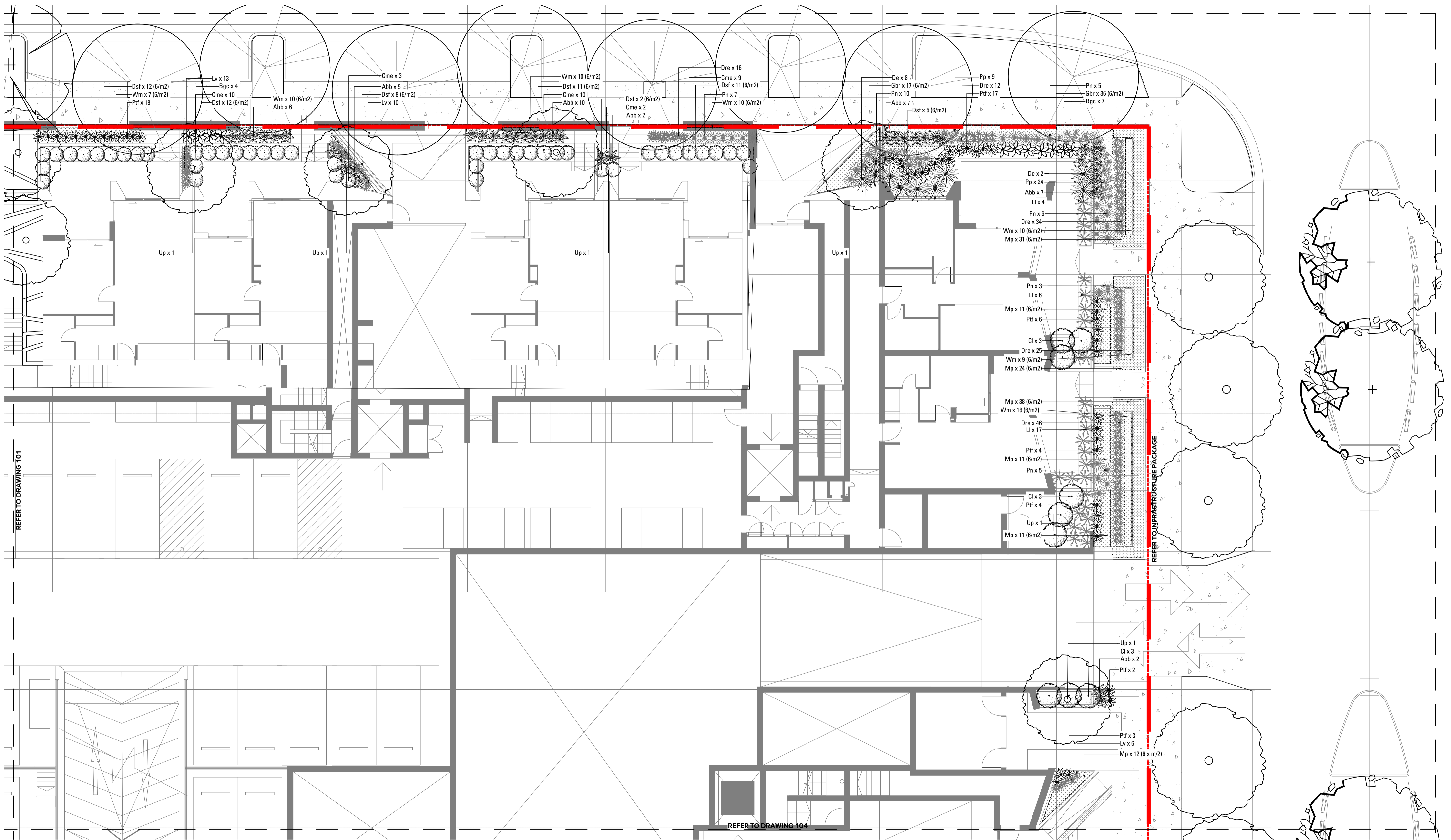
CODE	BOTANIC NAME	COMMON NAME	MATURE SIZE (h x w) (m)	POT SIZE	QUANTITY
TREES					
Up	<i>Ulmus parvifolia</i> 'Todd'	Chinese Elm	10 x 11	100L	15
SHRUBS & ACCENTS					
Am	<i>Acacia myrtifolia</i>	Myrtle Wattle	1.5 x 1.5	200mm	2
Abb	<i>Anigozanthus</i> 'Bush Blitz'	Kangaroo Paw	1 x 1	150mm	80
Ae	<i>Aspidistra elatior</i>	Cast Iron Plant	0.5 x 1	200mm	123
Bgc	<i>Banksia spinulosa</i> 'Giant Candles'	Giant Candles Banksia	1.5 x 1	150mm	42
By	<i>Beschorneria yuccoides</i>	Mexican Lily	1.5 x 2	200mm	3
Cl	<i>Callistemon</i> 'Little John'	Dwarf Bottlebrush	1.5 x 1.5	200mm	29
Cme	<i>Carissa macrocarpa</i> 'Emerald Star'	Natal Plum	1 x 1	200mm	273
De	<i>Doryanthes excelsa</i>	Gynea Lily	3 x 1.5	200mm	28
Pt	<i>Pittosporum tobira</i> 'Miss Muffet'	Miss Muffet	1 x 1	200mm	29
Ptf	<i>Phormium tenax</i> 'Flamin'	Flamin Flax	0.8 x 0.8	150mm	124
Px	<i>Philodendron</i> 'Xanadu'	Xanadu	1 x 1	150mm	142
GRASSES & RUSHES					
Dre	<i>Dianella revoluta</i>	Mauve Flax Lily	0.4 x 0.4	150mm	49
Ic	<i>Imperata cylindrica</i> 'Rubra'	Japanese Blood Grass	0.5 x 0.5	150mm	25
Ll	<i>Lomandra longifolia</i>	Spiny Headed Mat Rush	1 x 1	150mm	66
Lv	<i>Lomandra</i> 'Verday'	Mat Rush	0.6 x 0.6	150mm	58
Pn	<i>Pennisetum</i> 'Nafray'	Swamp Foxtail	1 x 1	150mm	184
Pl	<i>Poa labillardieri</i> 'Eskdale'	Tussock Grass	0.5 x 0.5	150mm	59
Pp	<i>Poa poiformis</i> 'Kingsdale'	Blue Tussock Grass	0.5 x 0.5	150mm	33
FERNS & CYCADS					
Aa	<i>Asplenium australasicum</i>	Birds Nest Fern	1.5 x 1.5	200mm	47
Ca	<i>Cyathea australis</i>	Rough Tree Fern	5 x 2	300mm	18
Zf	<i>Zamia furfuracea</i>	Cardboard Plant	1.5 x 1.5	200mm	49
GROUNDCOVERS					
Cgl	<i>Carpobrotus glaucescens</i>	Pig Face	0.25 x spreading	150mm	51
Dsf	<i>Dichondra repens</i> 'Silver Falls'	Kidney Weed	0.2 x spreading	150mm	266
Gbr	<i>Grevillea</i> 'Bronze Rambler'	Grevillea	0.25 x 1	150mm	53
Mp	<i>Myoporum parvifolium</i>	Creeping Boobialla	0.15 x spreading	150mm	65
Vh	<i>Viola hederacea</i>	Native Violet	0.4 x 2m	150mm	250
Wm	<i>Westringia fruticosa</i> 'Mundi'	Native Rosemary	0.4 x 1.5	150mm	57



H O M E B U S H B A Y

HILL ROAD BLOCK D WENTWORTH POINT LANDSCAPE DEVELOPMENT APPLICATION

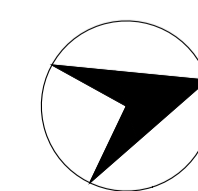


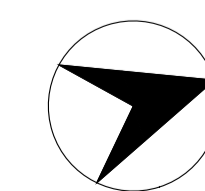
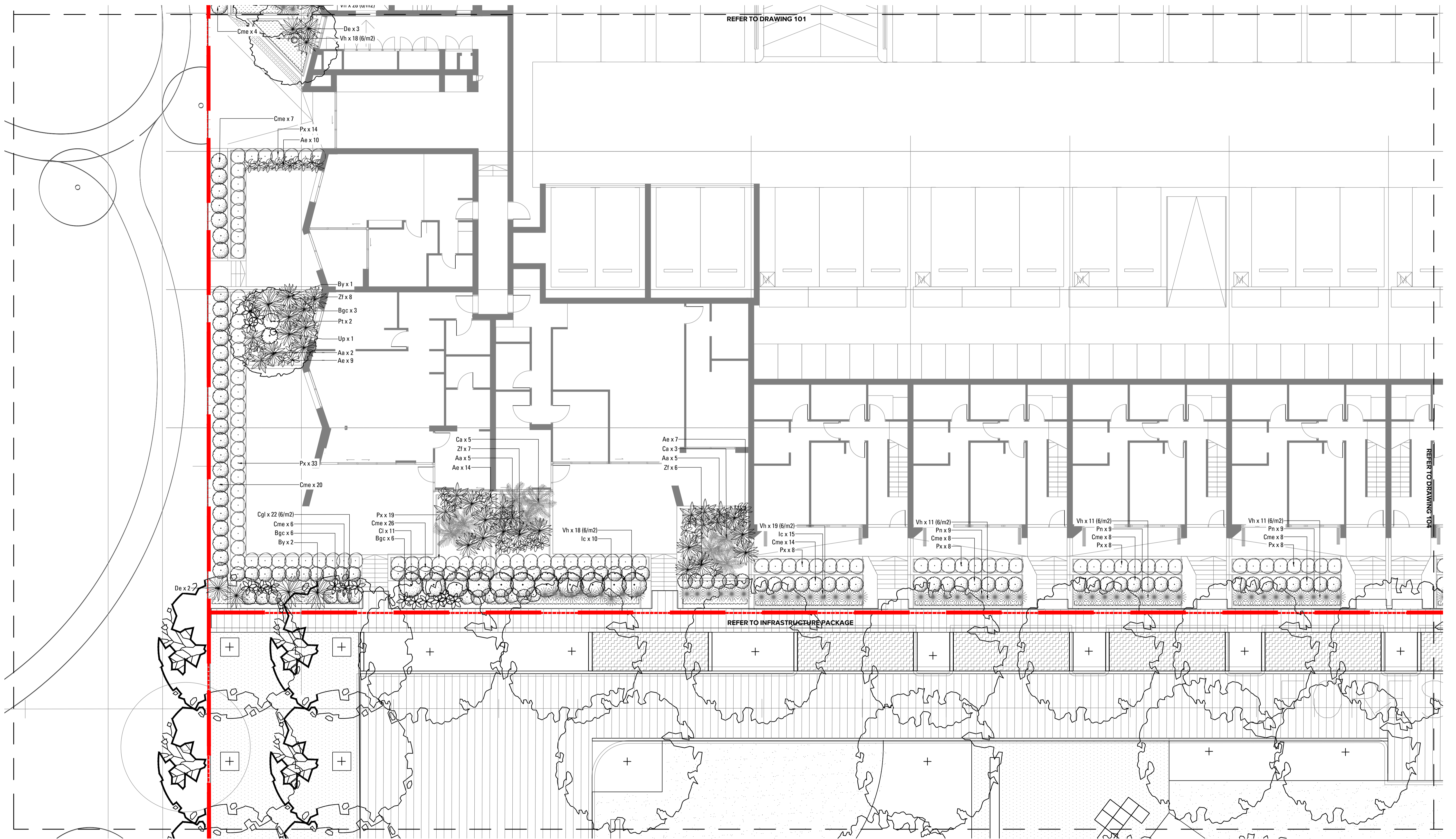


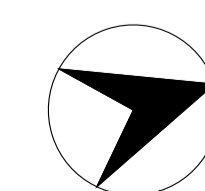
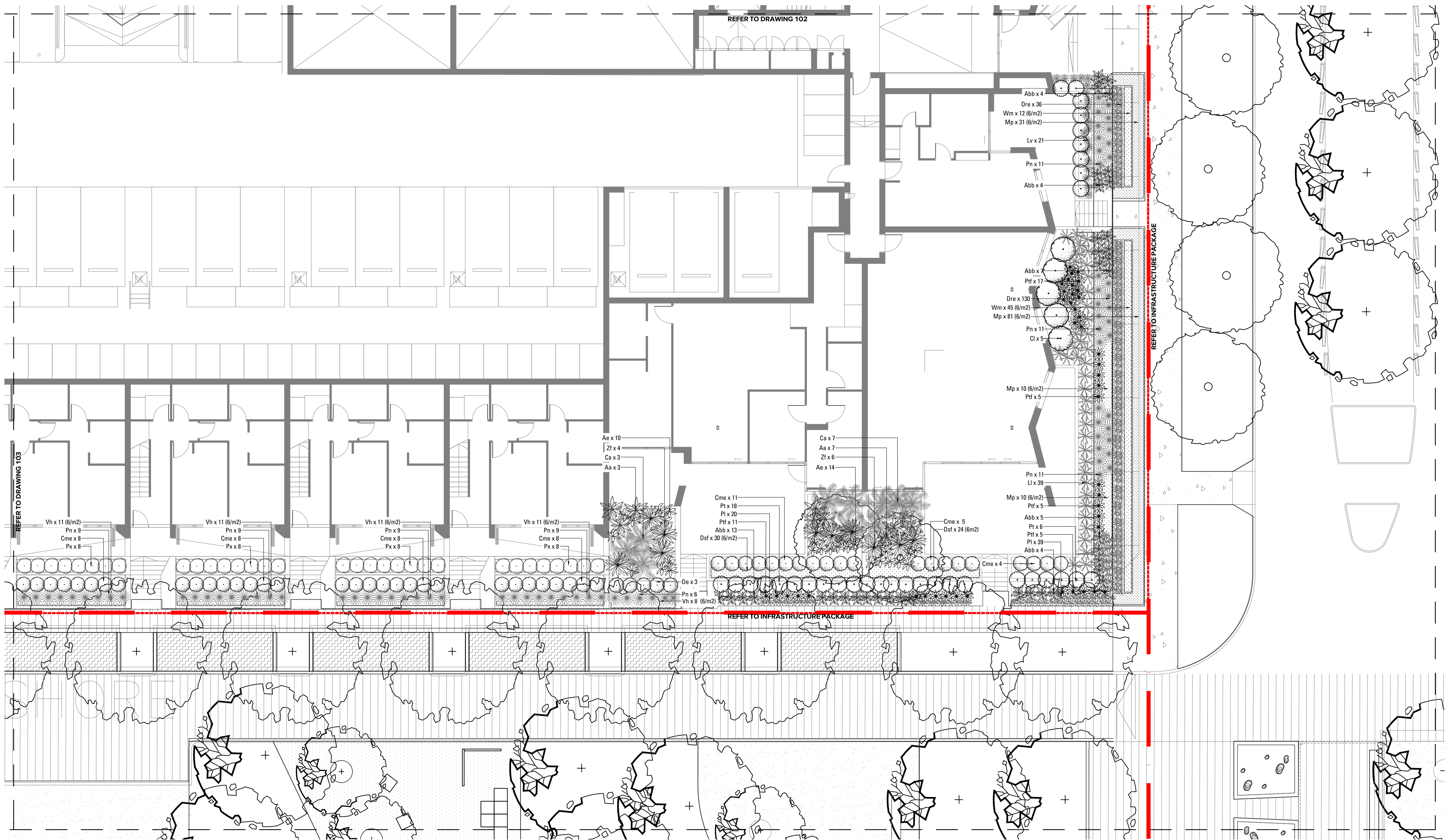
REFER TO DRAWING 101

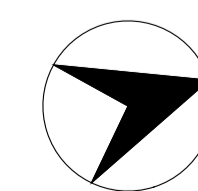
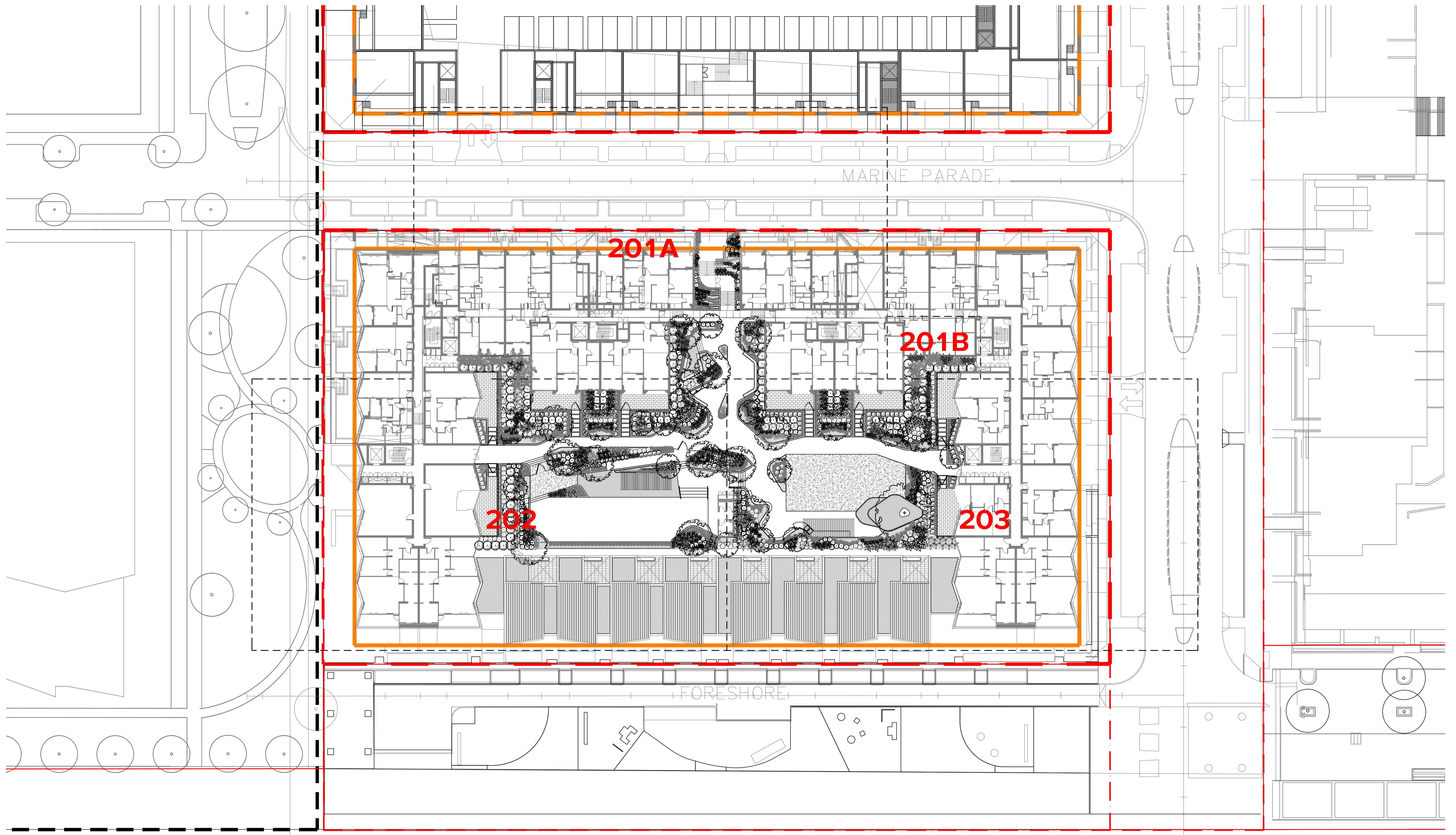
REFER TO INFRASTRUCTURE PACKAGE

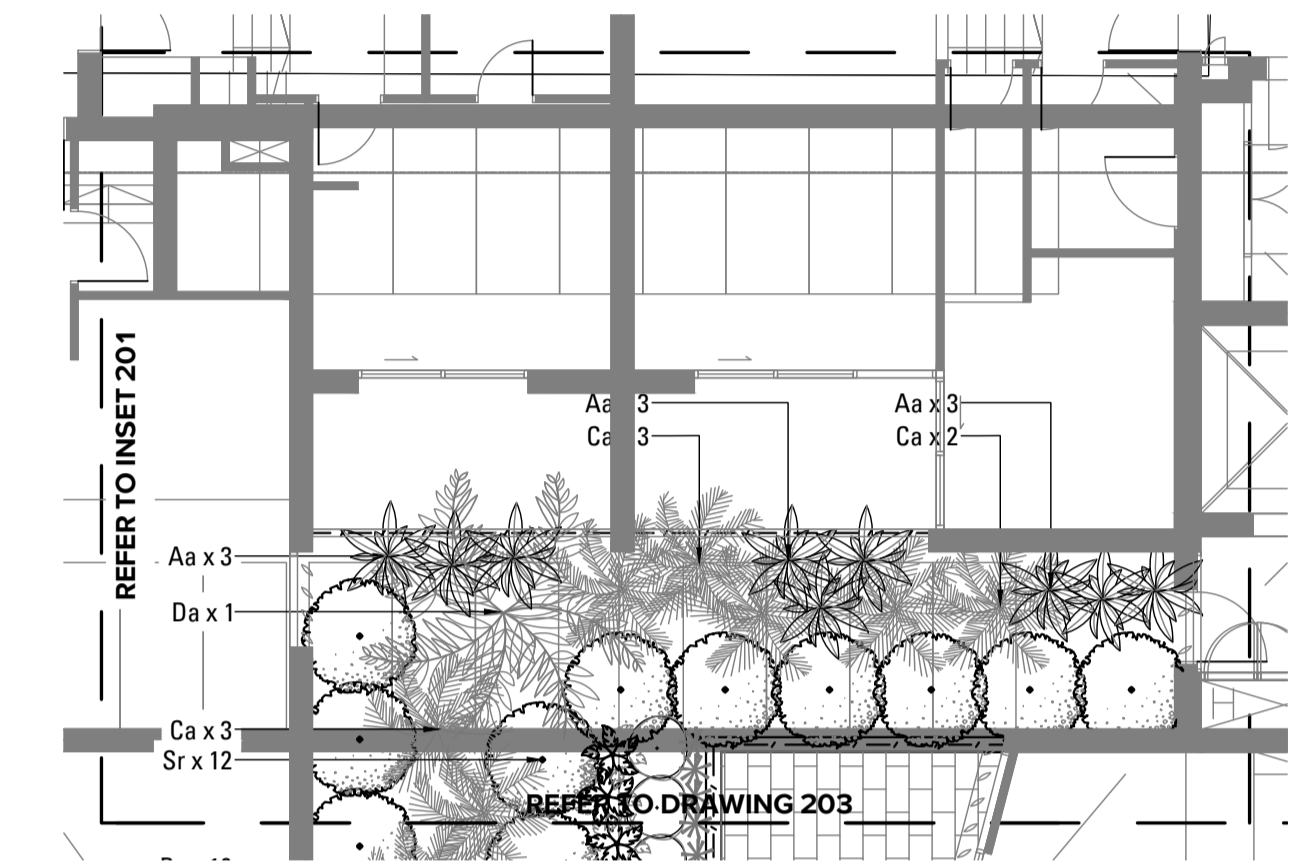
REFER TO DRAWING 104











INSET 201A

